

## Paint Street Historic Facts

Paint Street boasts a long and very unique history. Over the years its north end has been home to a variety of businesses, including pharmacies, general stores and hotels, while the south end boasts some of the most architecturally significant homes in the city.

Paint St. has also been home to numerous theaters. The Apollo was located at 76 N. Paint; the Orpheum at the NE corner of Paint and 4th (later Chillicothe Business College); and the Clough Opera House at the NE corner of Paint and 5th. The Clough was destroyed by fire on March 1, 1890.

Many of the structures located on North Paint St. between Water and Second were built after 1852, the year the Great Fire destroyed a large part of the downtown.

From 1802 to 1815 an open-air market house was located in the middle of Paint St., extending 150 ft. south from its intersection with Water St. In later years the market was located on the property where City Hall now stands.

As you begin south on Paint St., look to your left. Originally located near the northeast side of the Paint St./Second St. intersection was an Adena Burial Mound, in front of which Thomas Worthington built his family's first home. They lived there after their arrival in 1798, and prior to the completion of their mansion at Adena. The mound was leveled in 1813.

# Walking Map and Guide To Chillicothe's Historic Paint Street



Valley House, 1854

*Compiled and Designed by the*

Ross County



475 Western Ave., Suite A  
Chillicothe, OH. 45601  
740.779.9652

[www.rosscountyhealth.com](http://www.rosscountyhealth.com)  
[info@rosscountyhealth.com](mailto:info@rosscountyhealth.com)

## Ross County Health District

This brochure is a publication of the Ross County Health District and its Ross County Heart Health Program.

The Chillicothe City Health Department was formed in 1882, and the Ross County General Health Department in 1920. In 1979 the two merged.

Our goal is to protect and improve the health of the citizens of Chillicothe and Ross County. One of the best ways to do this is to promote a healthier lifestyle for all.

Walking is an easy and enjoyable way to improve your health. It burns calories and builds a strong heart.

Unlike jogging, walking is something almost anyone can do and benefit from. Before you begin your walk make sure that you are wearing comfortable shoes and weather-appropriate clothing. Also, extreme care should be taken when crossing streets.

We hope that this brochure will be used by our local residents and by visitors alike. Not only can it be used as a method for improving health, but also as a way to expand knowledge and interest in Chillicothe and its significant history.

Be sure to look for our other brochures: Main Street Church Walk and First Capital District Walk, and please enjoy your stroll down Chillicothe's historic Paint Street.

*\*\*Much of the information included in these brochures is from the Bicentennial Commission's book, "Chillicothe, Ohio 1796-1996."*

## Health Facts - Walking

Walking regularly can offer many benefits to your body... and your mind.

Consider these facts:

- ⇒ Walking for 20 minutes a day can burn off around seven pounds of body fat per year.
- ⇒ Walking can extend your life: For every minute you walk you add 1-2 minutes of life.
- ⇒ Shorter, faster walks are best for conditioning your heart and lungs, while longer, slower walks work best when trying to lose weight.

Here are some benefits of walking:

- ⇒ Builds healthier heart and lungs
- ⇒ Burns body fat
- ⇒ Increases metabolism
- ⇒ Reduces cholesterol
- ⇒ Lowers high blood pressure
- ⇒ Can help control and prevent diabetes
- ⇒ Helps you sleep
- ⇒ It may also help control your appetite, increase your physical energy, relieve stress, slow aging, reduce the risks of some kinds of cancer, help you recover from a heart attack or stroke, promote intestinal regularity, and reduce stiffness from arthritis.

*Funded in part by Preventive Health and Health Services Block Grant, Center for Disease Control and Prevention (CDC) and administered by the Ohio Dept. of Health, Bureau of Health Promotion and Risk Reduction, Cardiovascular Health Program. Its contents are solely the responsibility of the authors and do not necessarily represent the official views of CDC.*



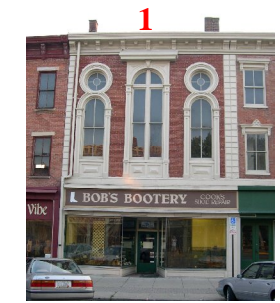
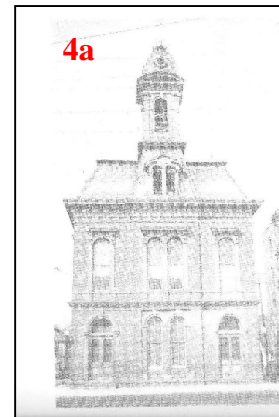
1. Wissler Building: this building was used as Officers Club No. 1 during WWI, and the days of Camp Sherman.  
 2. Home of the Ross County Law Complex since 1989, this site once housed the Hotel Carson. Through the years this block has also been home to the Ross County Bank Building, Kresge's Department Store and more.  
 3. Now home to Huntington Bank, this structure at 1 N. Paint was originally home to the Central National Bank, then the Savings Bank, and finally Huntington. By the 1840s, Chillicothe was already home to several banks. \*Rumor has it that

this building was originally intended to stand 8-10 stories tall.  
 4. Chillicothe's City Hall, or City Building, was built in 1875 at this site, 26 S. Paint St., in the Italianate style (4a), before being remodeled in 1956-57 (4b). For many years the back part of the building housed the city jail, but with the completion of the Ross County Law Complex in 1989, the jail was moved there. Note the alley to the north of City Hall, which allowed access to the city's market house.  
 5. The City Administration Building, 35 S. Paint, was originally home to a JC Penney Department Store.  
 6. Dating to around 1816, St. Mary's Parish

Office, 61 S. Paint, is one of the oldest structures in the city. It has had a variety of uses, once being used as an Academy for Young Ladies by the Sisters of Notre Dame.  
 7. St. Mary's Catholic Church was built in 1869. For years the church also operated a school (located just around the corner on 4th St. in a building that no longer exists).  
 8. The Franklin House, built in the Prairie Style in 1907, is home to a women's museum and is operated by the Ross County Historical Society (which also operates a museum just a short walk west on 5th St.).  
 9. Originally built in 1906 as the Post Office, this structure was later used as a

Christian school and now houses a private business. The Post Office moved in 1966.  
 10. (Not pictured) The Chillicothe and Ross County Public Library was built in 1906, one of many in the U.S. that would receive financial assistance through monies from Andrew Carnegie. NOTE: Many of Chillicothe's most beautiful and architecturally significant homes are located on S. Paint St. Styles include Greek Revival, Italianate, Gothic Revival and more. Some are included on the National Register of Historic Places.

NOTE: This walk is measured by walking south to the front of the library, before turning back and crossing Paint St. at the 5th St. intersection, and returning north.



Length of Walk: .84 mi.